

# the Messenger

Volume XLV999, No. 7 - July 2013

A monthly publication of North Arkansas Electric Cooperative

## Win An Energy Credit on Your Electric Bill!

North Arkansas Electric Cooperative is always striving to provide our members with the best service possible. As a result, NAEC is asking that you complete the following survey. Simply fill out the survey and return it with your bill or visit [www.naeci.com](http://www.naeci.com) and complete the survey there by August 15th. Of all the surveys returned, NAEC will draw 13 lucky winners to receive energy credits from \$200 to \$50. North Arkansas Electric Cooperative encourages you to please give serious consideration to participating in this survey. All information collected will be used for internal purposes only and will not be made available to outside sources.

**First Name**

**Address**

**Zip Code**

**Email address:**  
(Co-op use only)

**Last Name**

**City**

**Account Number**

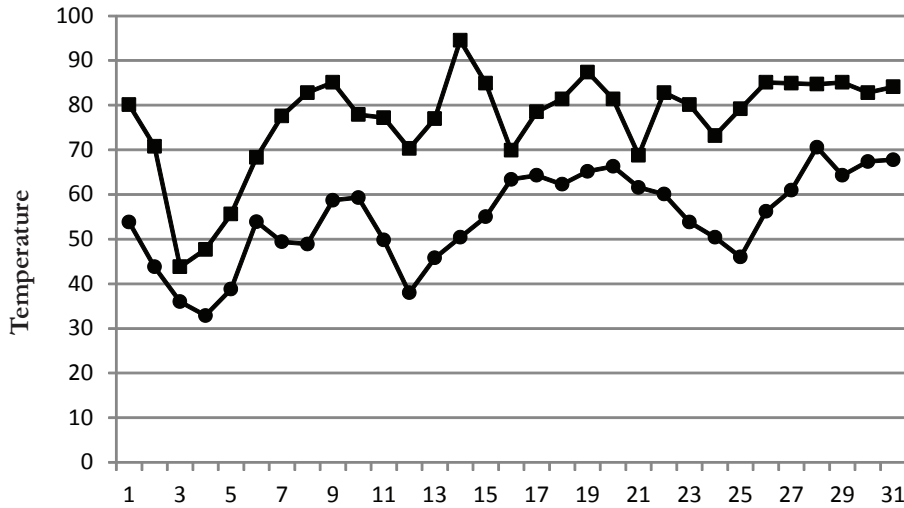
**Phone Number**

- Do you own or rent your home? Own .....  Rent .....
- How many square feet of living space do you have?  
Less than 1,000..  1,500 - 1,999 .....  2,500 - 2,999 .....   
1,000 - 1,499 .....  2,000 - 2,499 .....  3,000 + .....
- What year was your home built?  
Before 1970.....  1990 - 1999 .....  After 2009.....   
1970 - 1989 .....  2000 - 2009 .....
- Do you plan to build or remodel your home in the next 3 years?  
Yes .....  No.....
- What fuel does your water heater use?  
Electricity.....  Propane.....   
Natural Gas .....  Other .....
- Approximately what year was your water heater installed?  
Before 1990 .....  2000 - 2009 .....   
1990 - 1999 .....  After 2009.....
- What is your home's main source of heat?  
Electricity.....  Propane.....  Other .....   
Natural Gas .....  Wood.....
- What type of heating system do you have? (all that apply)  
Geothermal heat pump .....  Space heater.....  Gas heater/wall unit .....   
Air source heat pump .....  Furnace.....  Gas logs fireplace.....   
Baseboard/ceiling cable .....  Wood stove/fireplace ....  Other .....
- Approximately when was your heating system installed?  
Before 1990 .....  2000 - 2009 .....   
1990 - 1999 .....  After 2009.....
- What type of air conditioning system do you have?  
Geothermal heat pump .....  Window unit.....   
Standard heat pump .....  None (skip to #12) .....   
Central air .....
- Approximately when was your cooling system installed?  
Before 1990 .....  2000 - 2009 .....   
1990 - 1999 .....  After 2009.....
- Which of these NAEC services are of interest to you? (all that apply)  
Home energy audits.....  Secure online billing/payment.   
Operation Round-Up.....  Electronic paperless billing .....   
Marathon water heater leasing  Blower door energy audit .....

- What types of information from the co-op are most important to you? (all that apply)  
Information about energy efficiency or conservation .....  Updates from the co-op manager or staff .....   
Outage information .....  Co-op community activities.....   
Renewable energy and the environment .....  Legislative/government energy-related issues .....
- Besides the website, which of the following would you like the co-op to use to inform you about things like power outages, emergency situations and energy efficiency? (all that apply)  
Social media like Facebook or Twitter.....  Emails .....   
Text messages .....  Radio .....
- List cell number below to receive NAEC text message alerts:
- Do you use a handheld device like a cell phone, smart phone or tablet that operates mobile applications?  
Yes .....  No .....
- On your handheld device, would you likely use a co-op mobile application to do things like pay your bill, view hourly usage information or check on power outages?  
Very likely .....  Somewhat likely ....  Not at all likely .....
- Considering all your experiences, how satisfied overall are you with North Arkansas Electric?  
*Not at all satisfied*----->*Very satisfied*  
1 2 3 4 5 6 7 8 9 10
- How many people live in your home?  
1.....  2.....  3.....  4.....  5.....  6+...
- What is the age of the primary account holder?  
Under 25 ..  35 - 44 .....  55 - 64 .....  75+ .....   
25 - 34 .....  45 - 54 .....  65 - 74 .....
- Which best describes the occupation of the primary account holder?  
Professional (advanced degree or training) .....  Agriculture (farmer, grain, livestock, etc.).....   
White collar (office, retail, sales, etc.).....  Retired.....   
Blue collar (manufacturing, construction, etc.).....  Unemployed .....
- Any additional comments

# Daily Highs & Lows

## May 2013



	Days
<b>Average Daily High:</b>	76.87 compared to 85.05 in 2012
<b>Average Daily Low:</b>	54.68 compared to 57.15 in 2012
<b>Total Rainfall Amount:</b>	3.2" compared to 1.32" in 2012
<b>Warmest Day:</b>	May 14th, 94.5 degrees at 5:00 p.m.
<b>Coolest Day:</b>	May 4th, 32.9 degrees at 3:30 a.m.

## Lights Out!

*Automatic controls can keep lighting costs in check*

Whether you can't train your kids to turn out lights when they leave a room or need a better outdoor lighting scheme, automatic controls might be a cost-effective solution.

No matter what type you use, "the most important thing to remember for any lighting control is to use a type of lightbulb that doesn't need to 'warm up,'" says Brian Sloboda, a senior program manager specializing in energy efficiency for the Cooperative Research Network, the research and development organization for the nation's electric co-ops. "All of the lightbulbs for residential use now on the market will work—incandescents, compact fluorescent lamps [CFLs], and LEDs [light-emitting diodes]."

### Indoors

Occupancy sensors are helpful indoors, as long as they're positioned to detect people in any corner of the room. They're also good as task lighting—above places like a desk or kitchen sink—so you get the extra light you need while working, but you don't forget and leave it on all night.

They are two types of occupancy sensors: ultrasonic and infrared. Ultrasonic sensors detect sound; infrared sensors detect heat and motion.

Timers make an empty home look occupied. If kids are still running in and out, however, timers aren't as effective as occupancy sensors. Plug timers into a wall outlet or install them in the wall, like a light switch or thermostat. New varieties are digital.

Photosensors are generally best outdoors, but new applications have found they're also useful for LED nightlights. When an overhead light is on, the nightlight shuts off automatically.

### Outdoors

If you already have or are thinking about installing an outdoor security light, consider combining it with a photosensor to keep it from burning all day. A motion sensor goes one step further, if you don't want continuous light.

Timers are commonly used for aesthetic or holiday lighting, sometimes in conjunction with a photosensor—so they turn on at dusk and turn off at a designated time.

Visit [EnergySavers.gov](http://EnergySavers.gov) to learn more about energy efficiency in your home.

## Right-of-Way Locations

Asplundh Tree Trim Crews:  
Hardy areas

## Follow Us On

twitter 

facebook 



Energy Efficiency

*Tip of the Month*

Lighting accounts for about 13 percent of an average household's electric bill—cut costs by choosing new lightbulbs with increased output and longevity. Some cost more up front, but prices are dropping as technology advances. Options include color, brightness, and even dimming and multi-way functions. Combining lights with automatic sensors can cut costs further.

Source: NRECA's Cooperative Research Network

## We Want Your Response

North Arkansas Electric Cooperative abides by seven cooperative principles. The first principle of voluntary and open membership describes how cooperatives are voluntary organizations, open to all persons able to use their services and willing to accept the responsibilities of membership, without gender, social, racial, political or religious discrimination.

As a member-owned cooperative, we want your input. If you have questions, comments or concerns regarding the operation of North Arkansas Electric Cooperative, please send them to Messenger, P.O. Box 1000, Salem, AR 72576, or e-mail us at [info@naeci.com](mailto:info@naeci.com). Names will be withheld upon request, but all letters should be signed. All letters will be considered for publication in the Messenger or Rural Arkansas Magazine.

We appreciate your support these past 73 years and look forward to serving you in the future.



## North Arkansas Electric Cooperative

offices will be closed Thursday, July 4th  
in observance of Independence Day.  
24 hour emergency assistance will be available.