



NAEC seeks Youth Tour participants

North Arkansas Electric Cooperative is accepting applications for the 2018 Electric Cooperative Youth Tour. Four high school juniors will be selected to attend the all-expense-paid trip to Washington, D.C., June 8-14.

The application is available at www.naeci.com/youth-tour and at NAEC offices. The co-op must receive completed applications by March 16. Please call 870-895-6210 with any questions.

Scholarship applications available

The member-funded Operation Round Up® program awards thousands of dollars in scholarships to local graduating high school seniors each year.

The co-op is accepting applications for the 2018-2019 scholarship program. Students may get the application from the counselor's office or www.naeci.com/operation-round-up-scholarship. Applicants must return the typed, completed application to NAEC by

See **SCHOLARSHIP** on back.

Consider these steps to reduce usage during cold weather

The extremely cold weather that entered our area at the end of December and into January caused heating systems to run longer and more often as members tried to stay warm.

"Space heating accounts for about half of a home's energy costs, so the below-average weather we've had can have a dramatic effect on bills due to increased usage," said CEO Mel Coleman. "We encourage members to monitor their usage and contact the co-op with any questions or concerns."

Here are steps NAEC's energy advisers suggest you take to ensure you are heating your home as efficiently as possible:

- Make sure your heat pump's thermostat is not set on emergency heat. This can also be referred to as "E Heat," "EM Heat" or "Supplemental Heat." This setting only uses the heat strips of your unit, which will cost you more than twice as much as the setting for "Heat."
- Avoid adjusting nonprogrammable thermostats more than two degrees at a time. If you increase the set temperature by more than two degrees, the auxiliary heat strips will kick on to get to the desired temperature quicker.
- Limit the use of space heaters. Most space heaters use 1,500 watts and are not designed to heat a large room. Continually operating one 1,500-watt space heater can increase your bill by approximately \$120 a month. For those using space heaters in their well houses, NAEC's energy advisers suggest heat tape and insulation if possible. (Safety is key if using a space heater. We recommend you never leave one unattended and only operate it away from flammable items.)
- Schedule a checkup of your heating system by a licensed heating and air dealer. They can ensure your unit is operating at its most efficient. This can extend the life of your unit as well.



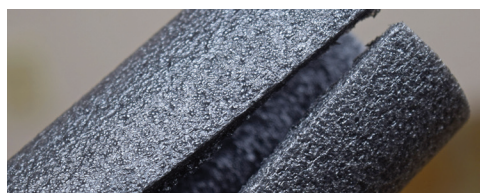
Heat pumps are an efficient method of heating a home, but make sure the thermostat is not set on emergency heat.



NAEC recommends limiting use of space heaters. Continual use of a 1,500-watt model can increase an electric bill by approximately \$120 a month.

See **TEMPS** on back.

ENERGY EFFICIENCY TIP OF THE MONTH



Consider insulating your hot water pipes. Doing so can reduce heat loss, allow you to lower the temperature setting and save an additional 3 to 4 percent per year on water heating.

— *energy.gov*

– **SCHOLARSHIP** continued from front

April 13. They must include a high school transcript and three letters of recommendation.

To be eligible for the scholarship program, high school seniors must graduate at the end of the 2018 school year, and their parents or guardians must be NAEC members. Applicants also must have a high school grade point average of 3.0 or higher on a 4.0 scale through the first semester of their senior year. The scholarship must be used to attend an accredited institute of higher learning on a full-time basis. For more information, please call 870-895-6210 or email tmoss@naeci.com.

– **TEMPS** continued from front

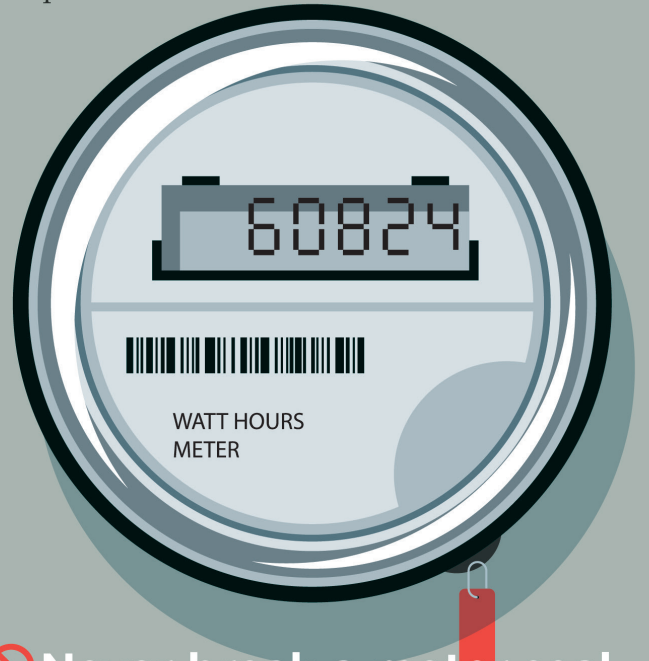
Energy efficiency upgrades to a home, such as added insulation or replacing an electric furnace with a high-efficiency heat pump, can be costly in the short term, but they will lead to substantial savings on a home's energy costs in the long term. NAEC's energy advisers can offer suggestions on the energy efficiency measures that would benefit your home the most.

Qualifying members who own their home can get a low-interest loan from NAEC to fund needed energy efficiency improvements. Improvements can include: geothermal heat pumps, air-to-air heat pumps, ductless mini-split heat pumps, insulation (ceiling, floor or wall), energy-efficient windows and doors, electric water heaters and LED fixtures and bulbs. Loan periods range from five to 12 years.

In the short-term, NAEC offers two options for members who are having difficulty paying their current bill. The first is to contact the co-op and request an extension. The second is to enter a delayed payment agreement that spreads the bill amount over four months with the first installment being paid by the 14th of the current month.

DO NOT TAMPER WITH YOUR ELECTRIC METER

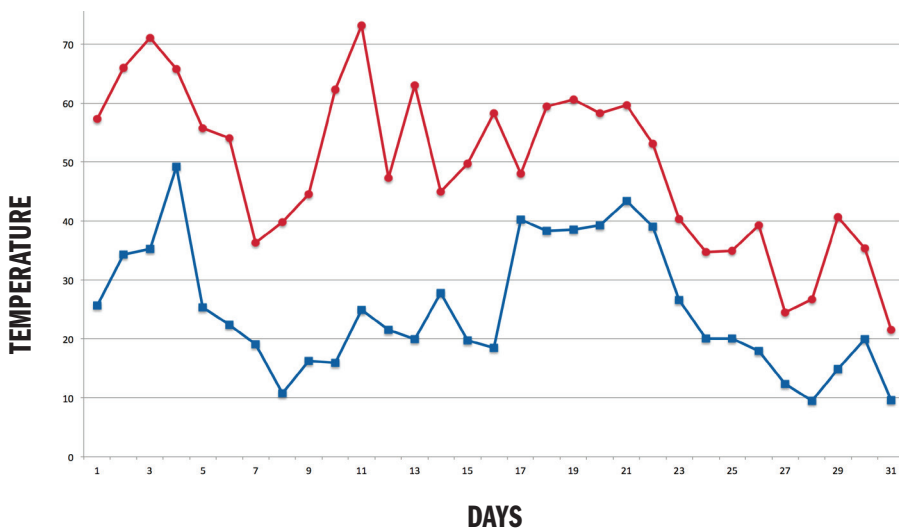
Meter tampering can result in electric shock, is illegal and increases electricity rates for other co-op members.



- Never break a meter seal.
- Never open a meter base.
- Never remove a meter or alter an entrance cable in any manner.

If you know or suspect that someone has tampered with their meter, please contact us immediately.

DAILY HIGHS & LOWS – DECEMBER 2017



Average Daily High:

49.23 compared to 48.8 in 2016

Average Daily Low:

25.04 compared to 27.3 in 2016

Total Rainfall Amount:

1.88" compared to 1.22" in 2016

Warmest Days:

Dec. 11, 73.2 degrees at 2 p.m.

Coollest Day:

Dec. 28, 9.5 degrees at 5:30 a.m.

CONTACT NAEC

870-895-3221
info@naeci.com
naeci.com

RIGHT-OF-WAY

West tree-trimming crews will be working in the Horseshoe Bend area through March.

ON THE FRONT

A co-op crew constructs a new transmission line near Mammoth Spring on Jan. 9.

