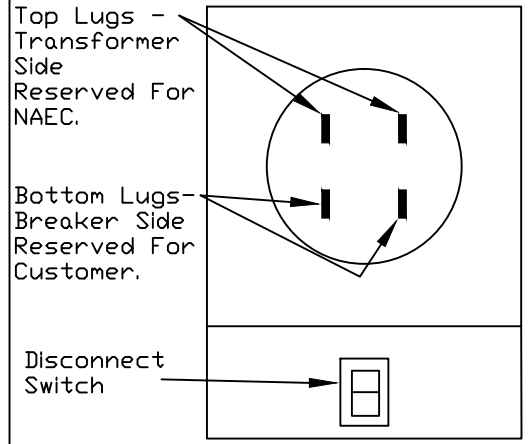


Please contact North Arkansas Electric Cooperative's engineering department at 870-895-6213 before beginning work.

Revision		North Arkansas Electric Cooperative, Inc.		Station, Address, Account No.	
RE	Added Wire Diagram	02/20			
RE	Revised 2' below footing area	02/20			
SP	11/11	02/20			
		Date	Drawn By	Scale	Dwg. No.
#	Description	Date	10/2001	RE	urd_serv.dwg

Underground Service

Front View Of Meter Base Wiring Diagram



Primary Wire Size	Amp. Service	100	200	320
	AL.	#2	4/0	2 Sets 4/0
Ground Wire Size	Cu.	#4	2/0	2 Sets 2/0
	Cu.	#4	#4	#2

The meter compartment of a meter base with a capacity above 100 amps must be at least 11 inches wide

Ring-type meter bases will not be accepted

Meter Base 5 to 6 feet Above Ground Level  
Weather Proof Underground Type Combination Box

Service Disconnect Required per National Electric Code Article 230.70

Two Inch Rigid Steel, Rigid Galvanized or UL approved Sch80 PVC Conduit

Conduit Straps 2 ft Apart

#4 Copper Ground Wire to attach to the ground rod  
Min. of 5/8"x 8' Ground Rod Driven flush with, or below ground level

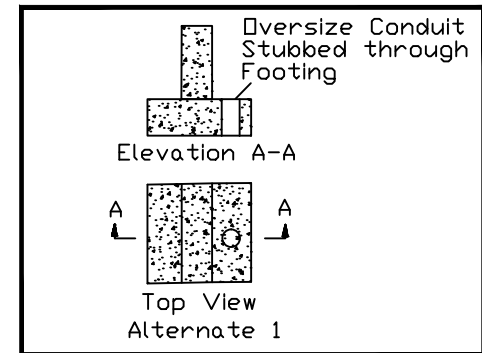
Finished Grade

Distribution Panel

Nipple With Lock Nuts & Fiber Bushings

Sweep 'L' or 1/8 Bend

Minimum Trench Depth 2'



Small Trough Area May Be Chipped off Footing To Support Conduit

End of Sweep on Undisturbed Earth