

# THE MESSENGER

A Publication for North Arkansas Electric Cooperative Members



Gov. Asa Hutchinson speaks during the Annual Meeting business session in the Salem Civic Center on June 7.



Member service representative Kelli Anderson helps serve barbecue dinners to members and their families.



Operations employees Chance Bailey, left, and Chase Pleasant help in the kids' zone.

## Carter, Hall elected to NAEC Board of Directors

North Arkansas Electric Cooperative's 78th Annual Meeting included 1,776 registered members and their families. It was held at the Fulton County Fairgrounds on June 7.

During the business session, CEO Mel Coleman announced the Operation Round Up® scholarship recipients, recognized employees marking milestone years of service and gave an update on the co-op. He also introduced Gov. Asa Hutchinson, Lt. Gov. Tim Griffin and Attorney General Leslie Rutledge, who all gave brief speeches.

Members elected two members to six-year terms on the NAEC Board of Directors. They were Beth Carter from Baxter County and Steve Hall from Fulton County.

Following the business session, door prizes were drawn from registered members. Those present had the chance to win a television, iPad®, coffee makers, wet/dry vacuums, LED products and more. George Herron of Mountain Home drove home with the biggest prize when he won the retired Chevrolet Silverado service truck.

NAEC thanks all who attended Annual Meeting and looks forward to hosting our members next year!

### Independence Day

Our offices will be closed Wednesday, July 4. Crews will be on call in case of an outage. Call 870-895-3221 or use our app to report.

## ENERGY EFFICIENCY TIP OF THE MONTH



Here's a cool tip for your fridge! Cover liquids and wrap foods stored in your refrigerator. Uncovered foods release moisture, which causes the compressor to work harder.

— [energystar.gov](http://energystar.gov)



# Stay away from substations!



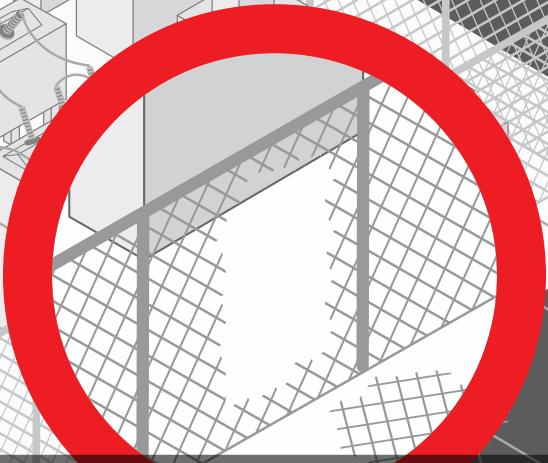
Never release metallic balloons near substations. If they get caught in the equipment or lines, they can cause power outages.



Never fly kites or drones near electrical substations.

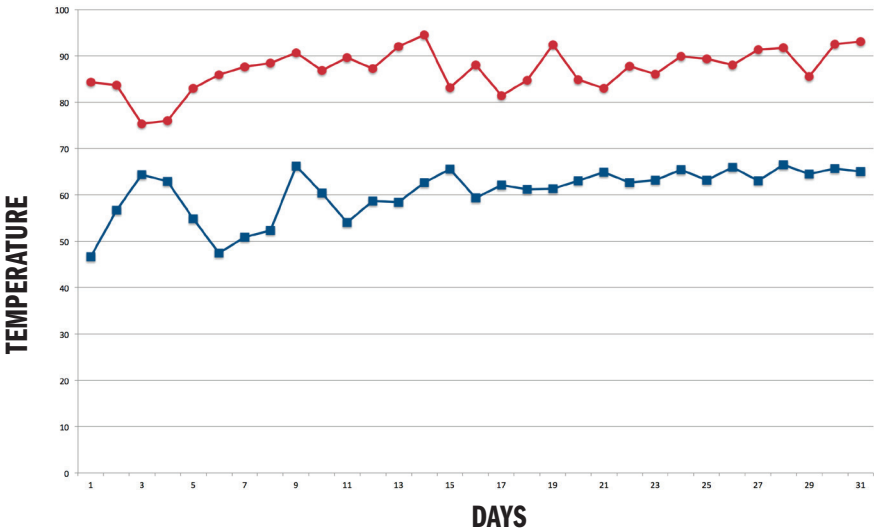


Teach children to stay away from electrical substation fences. These fences are NOT for climbing.



If you see a substation fence or transformer cabinet that is open or looks to be vandalized, please contact NAEC immediately.

## DAILY HIGHS & LOWS – MAY 2018



**Average Daily High:**  
87.04 compared to 79.3 in 2017

**Average Daily Low:**  
60.62 compared to 53.7 in 2017

**Total Rainfall Amount:**  
3.7" compared to 6.78" in 2017

**Warmest Day:**  
May 14, 94.5 degrees at 3:30 p.m.

**Coollest Day:**  
May 1, 46.7 degrees at 5:30 a.m.

### CONTACT NAEC

870-895-3221  
info@naeci.com  
naeci.com

### RIGHT-OF-WAY

West tree-trimming crews will be in the Viola, Mitchell and Wild Cherry areas.

### ON THE FRONT

Jeremiah's name was drawn for the boy's bike at Annual Meeting on June 7. Mary won the girl's bike.

